

Ophthalmology Snapshot

Nalinee Tuntivanich

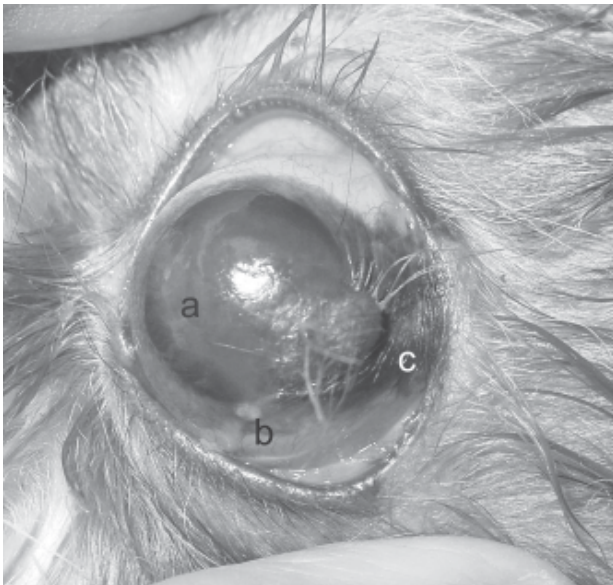


Figure 1.

- a. corneal opacity
- b. ocular discharge
- c. hyperpigmentation at the bulbar conjunctiva

History :

A 2 year-old female Shih Tzu was presented at the Ophthalmology Clinic, the Chulalongkorn University Small Animal Teaching hospital with a mass on the left eye. The mass was recognized by the owner when the dog was 6 months of age. The owner did not seek for the veterinarian's advice at that time because ophthalmic lesions were not present. During the past couple of weeks the dog had had red eye and purulent ocular discharge.

Ophthalmoscopic examination revealed a skin-like mass of a 3 millimeter in diameter on the temporal cornea and part of bulbar conjunctiva next to the corneal

limbus. Hairs were found projecting from the mass to the surrounding area. Bulbar conjunctiva at which the mass was located was hyperpigmented. There were also corneal opacity, conjunctivitis and purulent ocular discharge at time of examination.

Questions :

1. What is your diagnosis?
2. What is the treatment?
3. Why do other ocular signs occur?

Please turn to the next page for answers

Answers

1. Dermoid or choristoma at the cornea and the conjunctiva.
2. Removal of the entire mass and parts of the cornea (keratectomy) and the conjunctiva underneath it.
3. Chronic irritation from the mass and hairs in an unnatural position.

References

- Jae-il, L. Myung-jin, K. Il-hwan, K. Yeoung-bum K. and Myung-cheol K. 2005. Surgical correction of corneal dermoid in a dog. *J. Vet. Sci.* 6(4): 369-370
- Whitley, R.D. and Gilger, B.C., 1999. Diseases of the canine cornea and sclera. In: *Veterinary Ophthalmology*. 3rd ed. Gelatt K.N. Wolters Kluwer, Philadelphia. 638